



SAU PO CENTRE ON AGEING, HKU
香港大學秀圃老年研究中心



Gerontech and Innovation
Expo cum Summit
November 4, 2021

Gerontechnology in Medical-Social Collaboration: Present and Future

Dr Vivian W.Q. LOU

Director, Sau Po Centre on Ageing
Associate Professor, Department of Social Work and Social Administration
The University of Hong Kong

AGENDA

01

SUPER-AGED HONG
KONG

02

STRATIFIED CARE
NEEDS

03

TECH-ENABLED
MEDICAL-SOCIAL
COLLABORATION

04

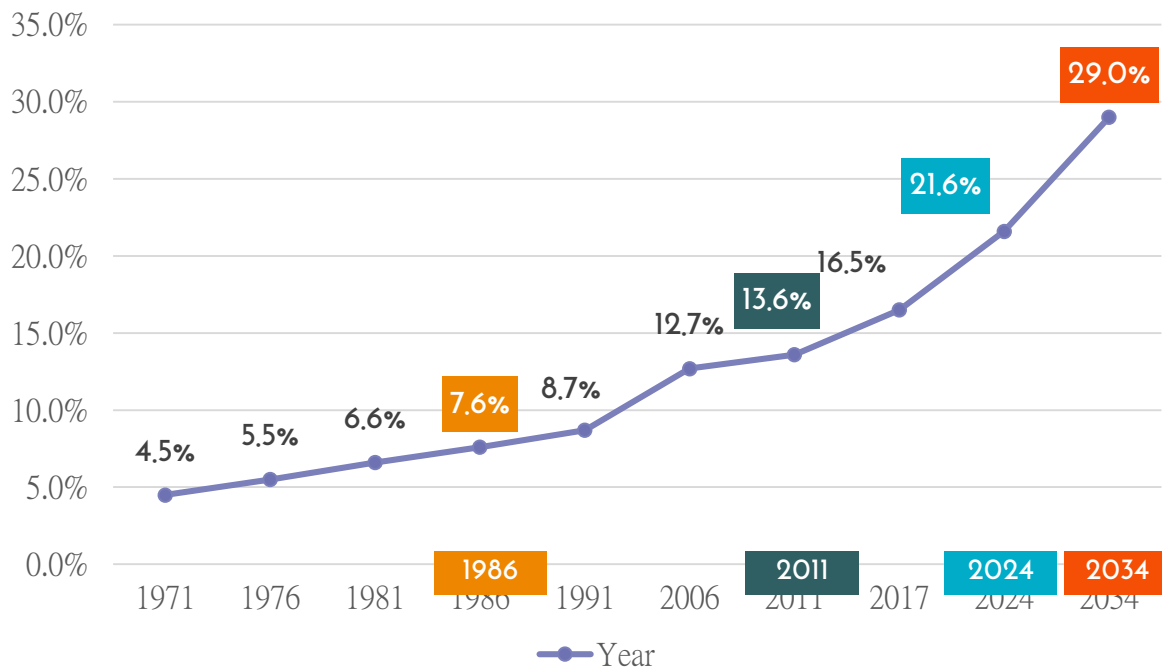
LOOKING FORWARD



01

Population Ageing
in Hong Kong

Towards Super-aged & Ultra-aged Hong Kong



The proportion of a society's population that is comprised of persons aged 65 or above

7.6% Ageing society

13.6% Aged society

21.6% Super-aged society

29.0% Ultra-aged society

Source:

Census and Statistics Department. (1991). Hong Kong 1991 Population Census. Retrieved from Hong Kong: <https://www.statistics.gov.hk/pub/hist/1991-2000/B11200711991XXXXE0100.pdf>

Census and Statistics Department. (2007). Hong Kong Population Projections 2017-2036. Retrieved from Hong Kong: <https://www.statistics.gov.hk/pub/B70708FD2007XXXXB0100.pdf>

Census and Statistics Department. (2020). Hong Kong Population Projections 2020-2069. Retrieved from Hong Kong: <https://www.statistics.gov.hk/pub/B1120015082020XXXXB0100.pdf>

O'Connor, S. (2014). World will have 13 'super-aged' nations by 2020. Financial Times. Retrieved from <https://www.ft.com/content/f356f8a0-1d8c-11e4-8f0c-00144feabdcd>

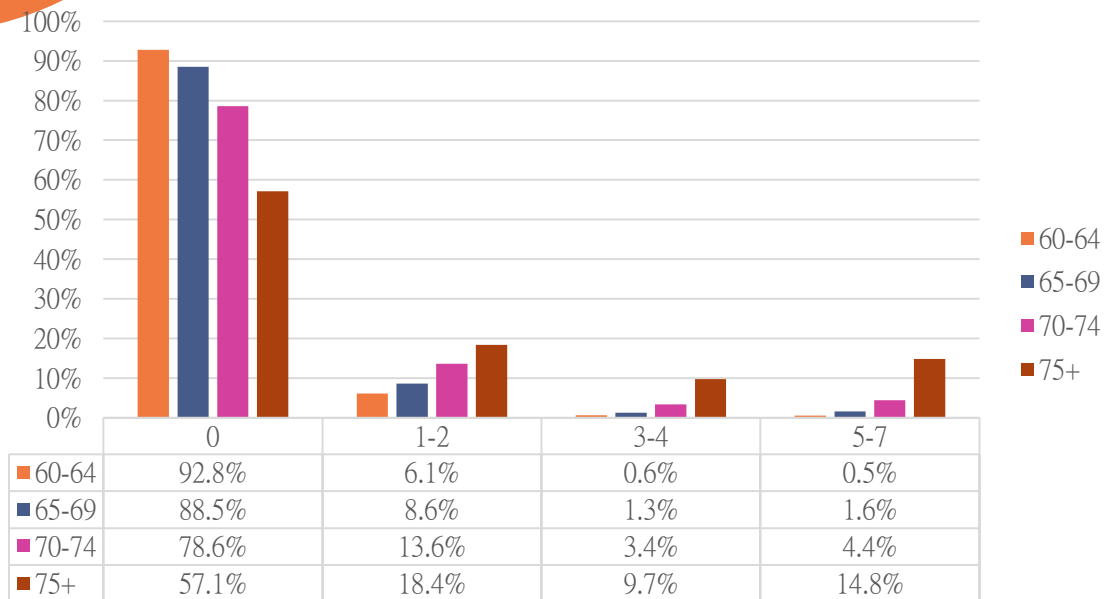


02

Stratified Needs

Health conditions and Independent living

Older persons by level of IADL impairment and age

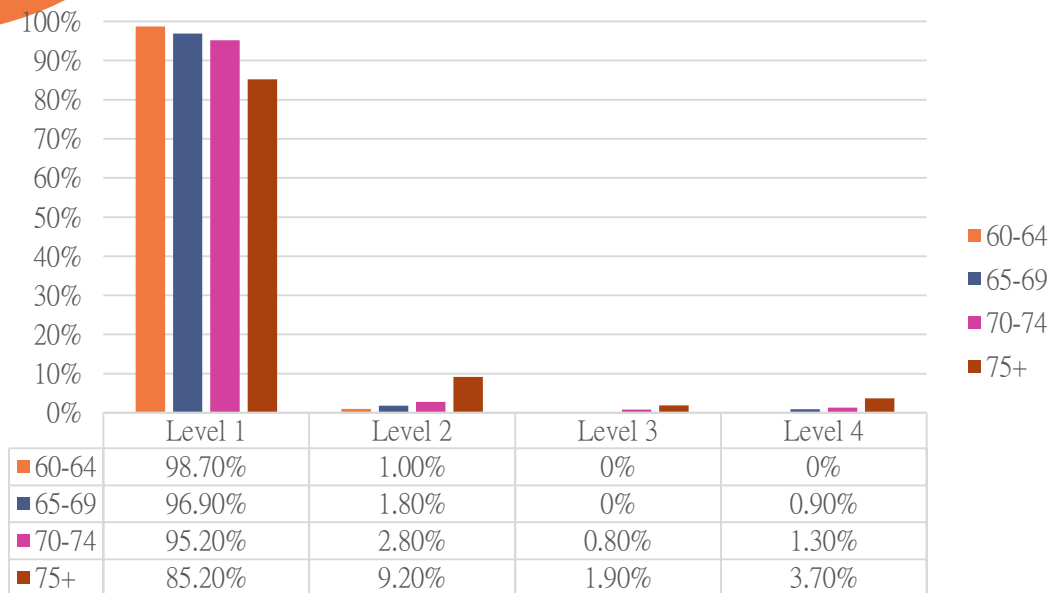


Instrumental Activities of Daily Living (IADLs)

- Using the telephone
- Shopping
- Preparing food
- Housekeeping
- Doing laundry
- Using transportation
- Handling medications
- Handling finances

Health conditions and self-care capability

Older persons by level of ADL impairment and age



Level of ADL impairment

Number of ADL that could not be performed independently

Level 1

0

Level 2

1-2

Level 3

3-4

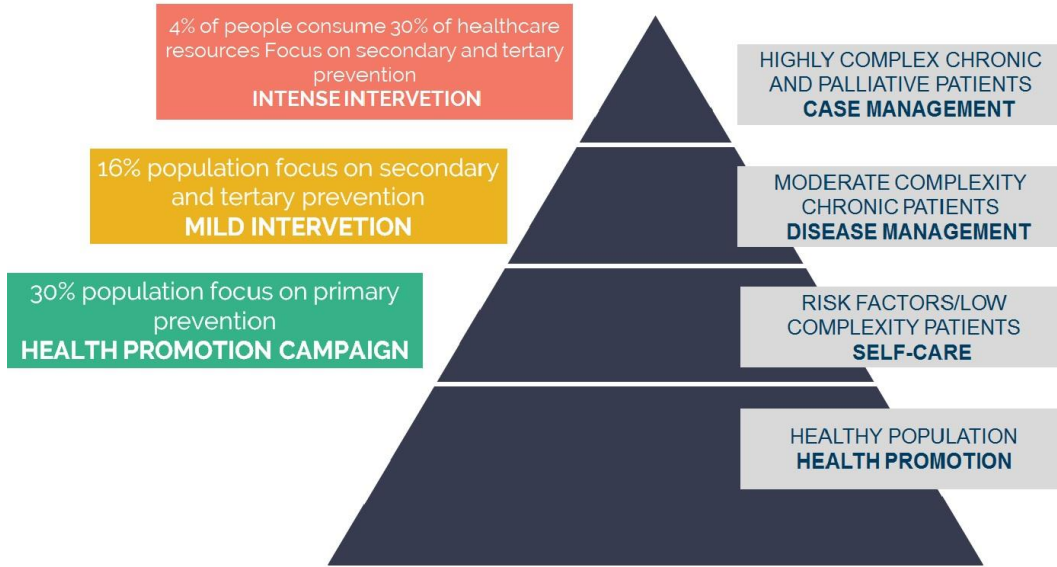
Level 4

5-6

Activities of Daily Living (IADLs)

- Feeding
- Contenance
- Transferring
- Toileting
- Dressing
- Bathing

Needs Stratification Strategy in Medical-Social Collaboration

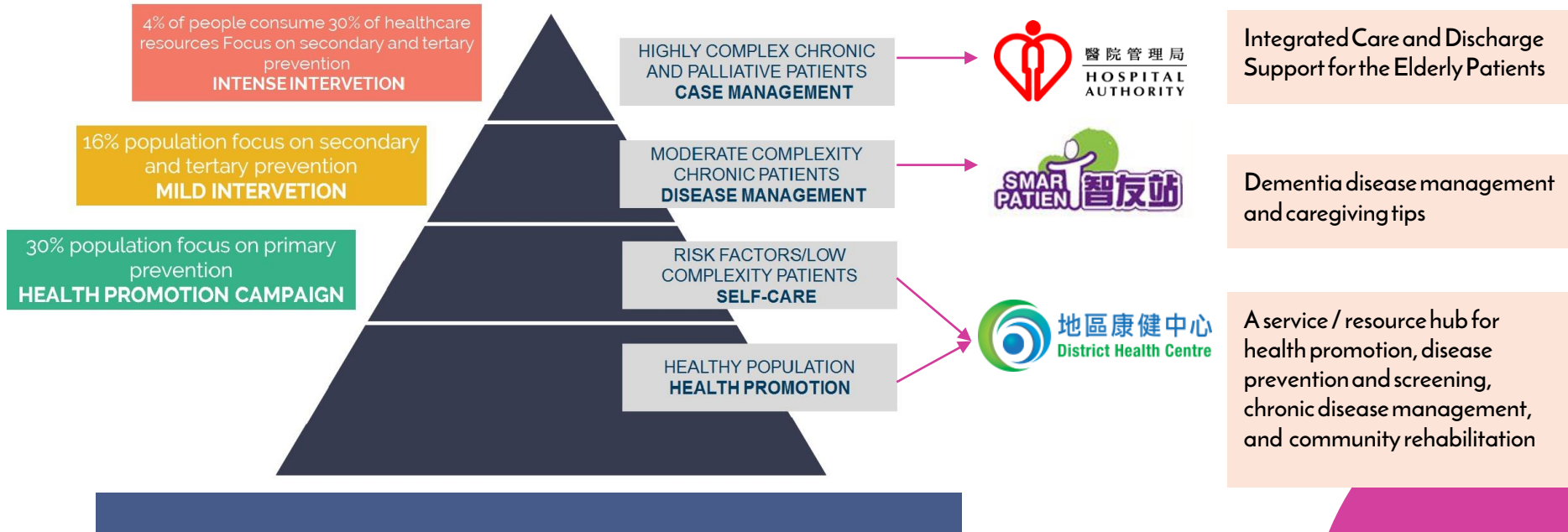




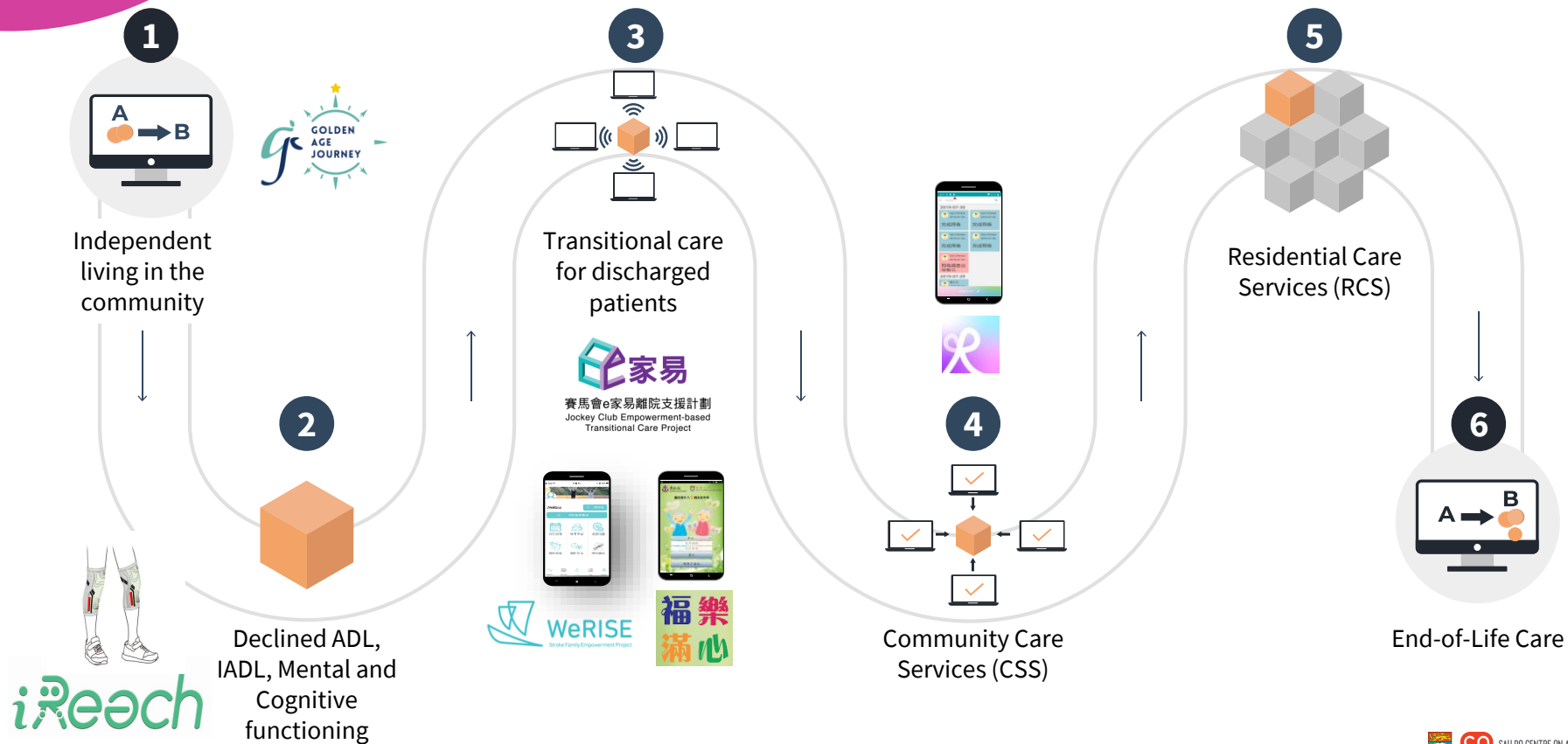
03

Tech-enabled Medical-Social Collaboration

Risk Stratification Strategy in Medical-Social Collaboration



From Self Care to Shared Care



Shared Care - Intelligent Robotics for Elderly Assistance

iReach

A Novel Development Approach:
User-Centric Co-Creation (UC³)



User centric

Matching user needs in the physical-psycho-social context



Co-creation

Multidisciplinary team co-creates with users of older adults and caregivers



Iterative cycles

Iterative process of need assessment, engineering development, and user evaluation





賽馬會e家易離院支援計劃
Jockey Club Empowerment-based
Transitional Care Project



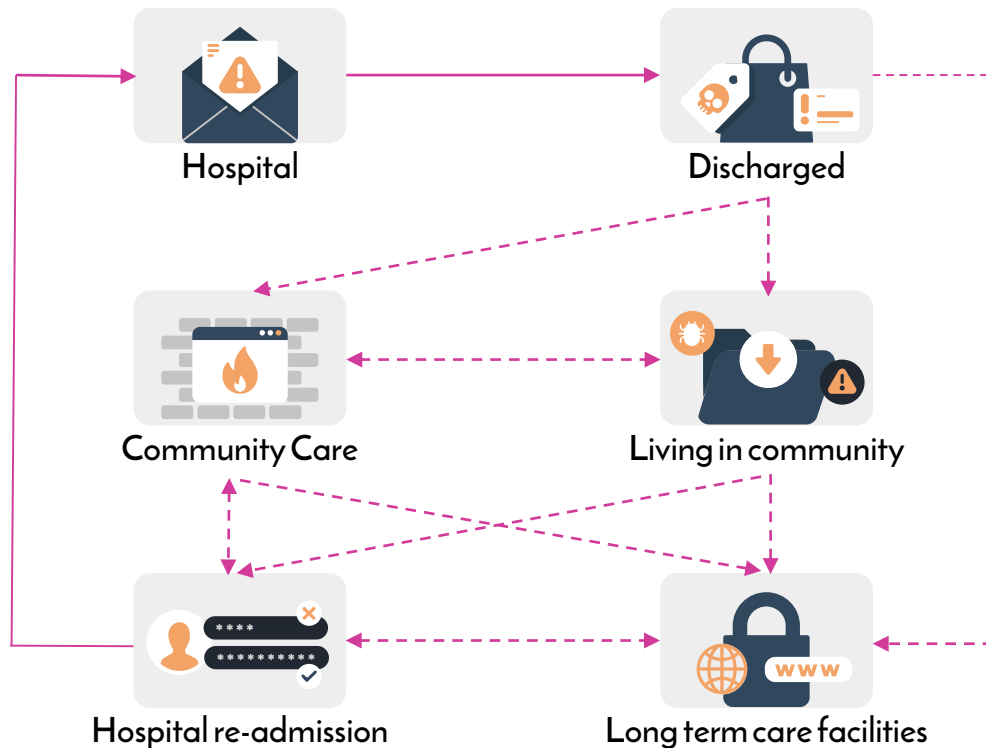
計劃內容

香港是全球預期壽命最長的地區，年齡增長或多或少伴隨急性或慢性疾病，相對增加長者的住院風險。研究發現，及時及有針對性的離院支援計劃不僅能強化康復，還能避免不必要的重複入院，減輕醫療及家庭負擔，提升生活品質。在香港賽馬會慈善信託基金的協助下，香港大學秀園老年研究中心聯同三間非牟利社福機構（基督教靈實協會、香港聖公會護理濟夫人中心、香港耆康老人福利會），推行「賽馬會e家易離院支援計劃」。本計劃致力透過嶄新的服務模式，全方位協助離院長者及其家庭照顧者，為其提供專業的社區復康支援，以達至最佳的照顧安排。

<https://jcetc.hk/>

Transitional Care

Promote safe and timely passage of patients





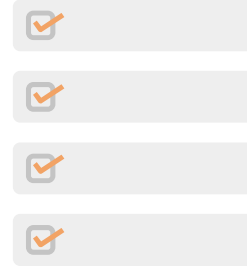
04

Looking Forward

Major Factors Influencing Attitudes Towards and Intention to Use the LDC technologies

Biophysical aging restrictions

physical and cognitive conditions



Anxiety

Fear, apprehension, or negative emotional reactions

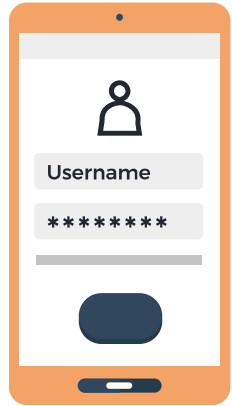
Requisite knowledge

Lack of requisite knowledge or experience



Intrinsic motivation

Needs in regard to security, independence, and connection



Use expectancy

Functionality, safety, mobility, cost and appearance as well as social influence



Source:

Wang, J., Fu, Y., Lou, V., Tan, S. Y., & Chui, E. (2021). A systematic review of factors influencing attitudes towards and intention to use the long-distance caregiving technologies for older adults. *International Journal of Medical Informatics*, 153, 104536. <https://doi.org/10.1016/j.ijmedinf.2021.104536>

THANKS



SAU PO CENTRE ON AGEING, HKU
香港大學秀圃老年研究中心



2/F, The Hong Kong Jockey Club Building
for Interdisciplinary Research, 5 Sassoon
Road, Pokfulam, Hong Kong



(852) 2831 5210



ageing@hku.hk



ageing.hku.hk